



c/o ACI Sport S.p.A. - via Solferino, 32 - 00185 Roma
via Stanis Dessy, 7 - 07041 Alghero
info@rallyitaliasardegna.com
pec: rallyitaliasardegna@legalmail.it

Date: 31 May 2017

Time: 18:00

Subject: **Communication 1**

Document: 3.1 - Page 1

From: The Clerk of the course

To: All competitors - Crew members

REMINDER / 2017 REGULATIONS / VALID AS FROM 1/01/2017

Article 253-6: SAFETY HARNESSES FOR WRC CARS: ***Harnesses in compliance with FIA 8853-2016 standard***

Compulsory for the following cars:

- *World Rally Cars homologated before 31.12.2013 in compliance with homologation extension 100/01 KSR as well as with its WR extension, and with Art. 255A of 2013 Appendix J.*
- *World Rally Cars homologated as from 01.01.2014 in compliance with homologation extension 200/01 WRC and with Art. 255A of 2016 Appendix J.*
- *World Rally Cars homologated as from 01.01.2015 in compliance with homologation extension 300/01 WRC and with Art. 255A of 2016 Appendix J.*
- *World Rally Cars homologated as from 01.01.2017 in compliance with homologation extension 400/01 WRC and with Art. 255A of Appendix J.*
- *Super 2000 (Circuits) cars in compliance with Art. 263 of Appendix J. Compulsory as from 01.01.2018 for the following cars:*
- *Super 2000 (Rallies) cars in compliance with Art. 255A of 2013 Appendix J.*
- *Group RGT cars in compliance with Art. 256 of Appendix J.*
- *Group R5 cars in compliance with Art. 261 of Appendix J. For other cars: Recommended, compulsory as from 01.01.2023.*

Technical list n°57 is available on the following link: <http://www.fia.com/regulation/category/761>

Article 253-7: EXTINGUISHERS - EXTINGUISHING SYSTEMS:

In rallies: Articles 7.2 and 7.3 apply. Extinguishing systems and Manual extinguishers in compliance with FIA Standard 8865-2015 (Technical List n°52) are recommended.

- *World Rally Cars homologated before 31.12.2013 in compliance with homologation extension 100/01 KSR and with its WR extension, as well as with Art. 255A of 2013 Appendix J.*
- *World Rally Cars homologated as from 01.01.2014 in compliance with homologation extension 200/01 WRC and with Art. 255A of Appendix J.*
- *World Rally Cars homologated as from 01.01.2015 in compliance with homologation extension 300/01 WRC and with Art. 255A of 2016 Appendix J.*
- *World Rally Cars homologated as from 01.01.2017 in compliance with homologation extension 300/01 WRC and with Art. 255A of Appendix J.*
- *in compliance with Art. 255A of 2013 Appendix J.*
- *in compliance with Art. 256 of Appendix J. in compliance with Art. 261 of Appendix J.*

Extinguishing systems in compliance with FIA Standard 8865-2015 (Technical List n°52) are compulsory for the following cars:

Super 2000 (Rallies) cars

Group RGT cars

- *Group R5 cars*

Technical list n°52 is available on the following link: <http://www.fia.com/regulation/category/761>

Date: 31 May 2017
 Subject: **Communication 1**

Time: 18:00
 Document: 3.1 - Page 2

Article 253-8.3.5: PROTECTIVE PADDING: *Where the occupants' bodies could come into contact with the safety cage, flame retardant padding must be provided for protection.*

Application: For all categories.

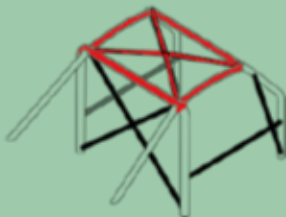
For competitions without co-driver, paddings are compulsory on driver's side only.

253-68

Technical list n°23 is available on the following link: <http://www.fia.com/regulation/category/761>

All tubes of the cage identified on Drawing 253-68 and all roof reinforcements must be fitted with paddings in compliance with FIA standard 8857-2001 type A (see Technical List n°23).

Each padding must be fixed in such a way that it is not moveable from the tube.



ANTI-TORPEDO TABS

Article 253-7.2: EXTINGUISHERS - Systems mounted:

It must be secured by a minimum of 2 screw-locked metallic straps and the securing system must be able to withstand a deceleration of 25 g. Anti-torpedo tabs are required.

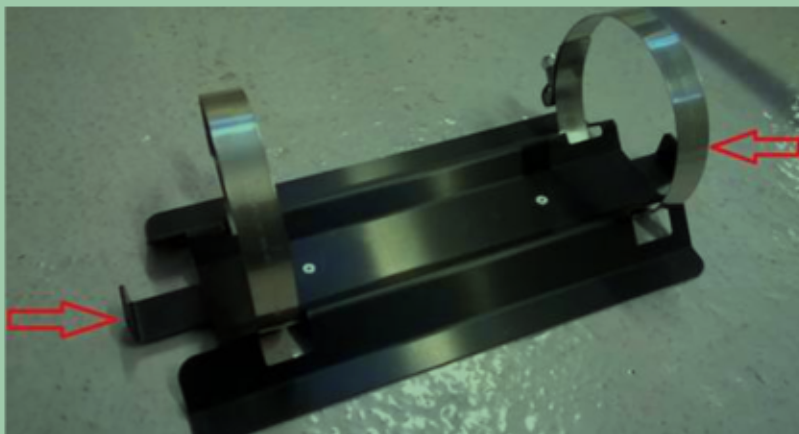
Article 253-7.3: Manual extinguishers

All extinguishers must be adequately protected. Their mountings must be able to withstand a deceleration of 25 g. Furthermore, only quick-release metal fastenings (two minimum), with metal straps, are accepted. Anti-torpedo tabs are required

See below an example of anti-torpedo device:

Maintenance on all Extinguisher mounted system:

Maintenance on Extinguisher mounted system: must be done as specified in the specific instruction manual (see Technical list n°16 and n°52)





c/o ACI Sport S.p.A. - via Solferino, 32 - 00185 Roma
via Stanis Dessy, 7 - 07041 Alghero
info@rallyitaliasardegna.com
pec: rallyitaliasardegna@legalmail.it

Date: 31 May 2017
Subject: **Communication 1**

Time: 18:00
Document: 3.1 - Page 3

ARTICLE 253-13: GENERAL CIRCUIT BREAKER / ALL COMPETITORS

The general circuit breaker must cut all electrical circuits, battery, alternator or dynamo, lights, hooters, ignition, electrical controls, etc.) and must also stop the engine.

For Diesel engines having no electronically controlled injectors, the circuit breaker must be coupled with a device cutting off the intake into the engine. It must be a spark-proof model, and must be accessible from inside and outside the car.

This outside triggering system only concerns closed cars. Application: **Compulsory fitting for all cars taking part in speed races on circuits, in rallies or hill-climbs.** The fitting is recommended for other competitions.

ARTICLE 261-304-2: POP-OFF VALVES, R5 CARS: *The homologated FIA boost control system (pop-off valve, see FIA Technical list n°43) must be fitted on the FIA pipe as described on the homologation form.*

Its mounting must be carried out in such a way that two screws have to be entirely removed in order to be able to separate it from the FIA pipe.

These screws may be sealed by the scrutineers.

Technical list n°43 is available on the following link: <http://www.fia.com/regulation/category/761>

As for the outside, the triggering system of the circuit breaker must compulsorily be situated at the lower part of the windscreen mountings for closed cars. It must be marked by a red spark in triangle with a base of at least 12 cm. Pop-Off valves + Inserts for R5 cars.

As from 1/01/2016, **an additional insert is compulsory** to be used with R5 pop-off valves (see technical list n°43).

R1 / R2 / R3 / R5: Availability of parts

For information, the following condition applies to **all R1 / R2 / R3 / R5** cars and is published in each Homologation Form.

ALL SPECIFIC MOTORSPORT COMPONENTS HOMOLOGATED AND FEATURING IN THE EXTENSIONS MENTIONED ABOVE MUST BE INDIVIDUALLY AVAILABLE FOR PURCHASE IF AVAILABLE AS A SEPARATE COMPONENT

The Clerk of the course
Lucio DE MORI